



### Environmental tips

Please dispose of the package, used components (battery) and hazardous fluid (antifreeze and machine oil) properly according to local waste disposal regulations to ensure environmental safety and please remember to recycle them for further use if possible.

# CLEANING EQUIPMENT OWNER'S GUIDE

## MULTIFUNCTIONAL BURNISHER

BF517·517A·517B  
BF519·519A·519B  
BF521·521A·521B  
BF522·522A·522B  
BF520

**ISSA** MEMBER®  
The Experts  
On Cleaning and Maintenance  
ISO9001:2008 International  
Quality System Certified

This manual contains important safety precautions and instructions on the correct operation of product, please read this carefully before using the product.

## Operation instructions for multifunctional burnisher

### ●Operation procedure

1. Mount on brush and pad: hold the operation wand upright and tilt burnisher to load the proper brush or cleaning pad counter-clockwise unto the motor clip.
2. Mount water tank on the wand: place burnisher on ground horizontally and keep wand vertical. Loose upper and lower clips of water tank and put the tank onto the wand, adjust the position of the water tank on the wand. Tighten the water tank, then connect one end of plastic pipe to outlet of the tank, and the other end to inlet of the machine base.
3. Adjustment of operation wand: put the burnisher on the normal floor, pull up the handle adjustment lever , adjust the wand to a proper working position to ensure erect posture and arm slightly bending when operating. Then loose the handle adjustment lever, and wave the wand to check if the operation wand is locked correctly by adjusting gear.
4. Load water (cleanser): Load water or cleanser into water tank according to cleaning demand.
5. Wire connection: Connect base wire to the power coupler of wand, loose wire of wand, check to ensure the voltage identical with the rating voltage, then connect the power cable into the socket.
6. Power operation: power is controlled by left and right switch lever. For the sake of safety, the startup switch lever work jointly with the safety interlock lever, push the safety interlock lever from the middle to the bottom while pressing the switch lever. Loose the safety interlock lever after the burnisher startup.
7. Direction control: after the burnisher startup, pull up or press down the wand slightly, the burnisher will move to right or left automatically. Press down the wand will increase the hind pressure of the drive plate, thus make burnisher move to left. Pull up the wand will increase the fore pressure of the drive plate, thus make burnisher move to right.
8. Water flow control: When water is needed pull up the fluid control lever and loose it to stop water flow.
9. Job completion: disconnect power, empty water in tank and clean tank when with clean water. Unload brush or pad for cleaning.

### ●Safety rules and attentions:

1. Before operation, please read this manual carefully in order to ensure operating this machine correctly. If any questions, please contact the local sale agent for further information.
2. Please check to ensure the power voltage identical with the rated voltage marked on the nameplate before connecting the power cable. Pull out the power plug while not in use and wire the power cable properly.
3. Check to ensure the power cable undamaged before using. If the power cable was damaged or the instrument fault, let a maintenance man from the shop or similar specialist change or repair, to prevent unfavorable result. Never use the spare parts from other company, otherwise, we don' t take on responsibility.
4. Don' t use the machine outdoors while raining in order to avoid short circuit and the electric shock accident. And keep it in dry place while not in use.
5. Make sure power cable is clear from any heavy body upon it. Plug out power before any maintenance and cleaning.
6. Before cleaning carpet, please moisten carpet with water of cleanings to lessen cleaning resistance for the machine.
7. This appliance does not intend to be operated by weak , dull or psychotic individuals unless they are under correct directions or assistances from ones with responsibility for their safety .
8. Children should be supervised strictly to ensure that they always keep away from this appliance.
9. This machine is suitable for hotel, office, and warehouse.

## INSPECT CERTIFICATE

Cable: ☒ \_\_\_\_\_ Charger: ☒ \_\_\_\_\_

Batteries: ☒ \_\_\_\_\_ Switch: ☒ \_\_\_\_\_

Outside: ☒ \_\_\_\_\_ Fittings: ☒ \_\_\_\_\_

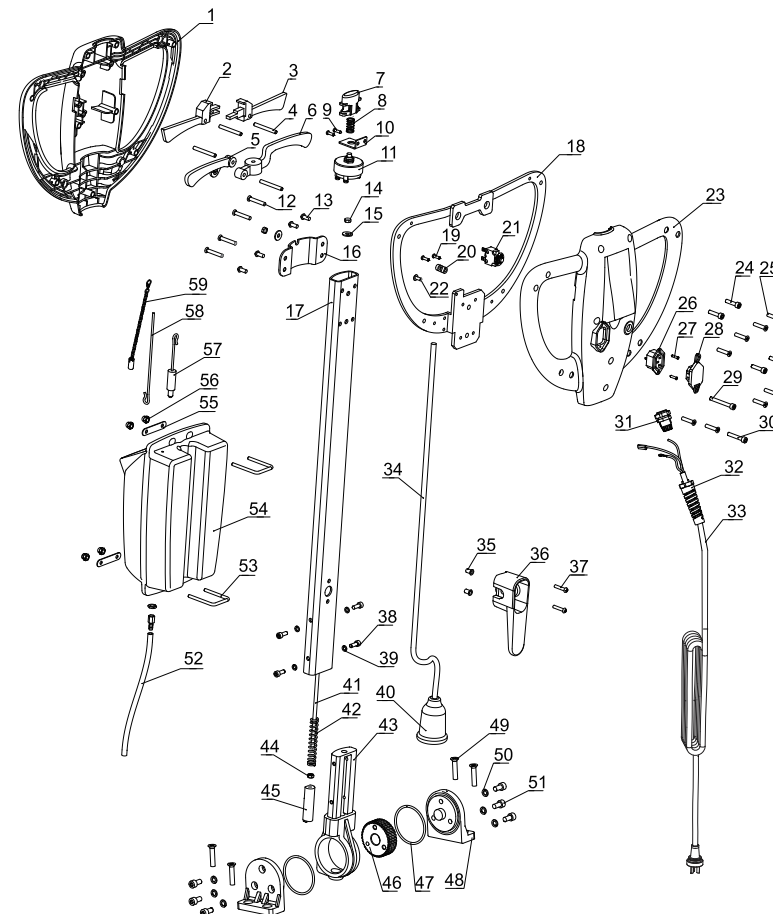
Suction: ☒ \_\_\_\_\_ Control: ☒ \_\_\_\_\_

Fuselage: ☒ \_\_\_\_\_ Operation: ☒ \_\_\_\_\_

Manual: ☒ \_\_\_\_\_ Packing: ☒ \_\_\_\_\_

QC by: ☒ \_\_\_\_\_ Date: ☐ \_\_\_\_\_

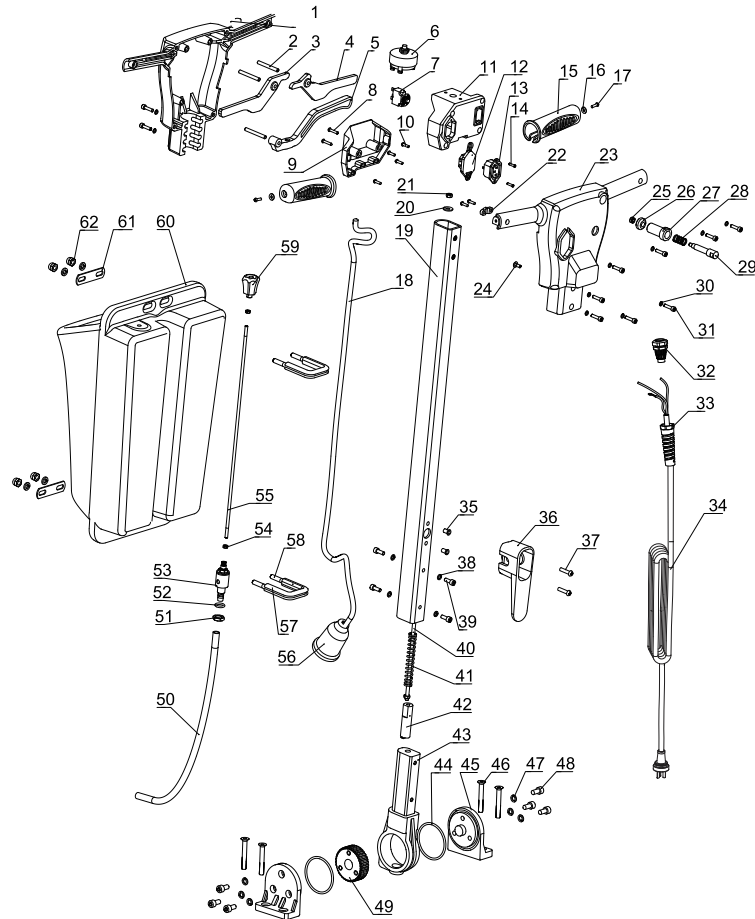
## BF517A/519A/521A/522A EXPLODED VIEW



NO. Name

- |   |  |  |                                |
|---|--|--|--------------------------------|
| 1 --- Handle cover                              | 16 --- Support board                             | 31 --- Cable support                   | 46 --- Selector gear           |
| 2 --- Left starting handle                      | 17 --- Operating lever                           | 32 --- Cable grommet                   | 47 --- O-rubber ring           |
| 3 --- Right starting handle                     | 18 --- Steel skeleton                            | 33 --- Three-flat-pin plug power cable | 48 --- Pivot bracket           |
| 4 --- Iron rod                                  | 19 --- Cross countersunk head self-tapping screw | 34 --- Small wire                      | 49 --- Cross countersunk screw |
| 5 --- Fluid control lever                       | 20 --- Small cable clip                          | 35 --- Riveting nut                    | 50 --- Spring gasket           |
| 6 --- Handle adjustment lever                   | 21 --- Overload protection device                | 36 --- Wire block                      | 51 --- Allen screw             |
| 7 --- Switch button                             | 22 --- Swashplate head screw                     | 37 --- Swashplate head screw           | 52 --- Water pipe              |
| 8 --- Switch spring                             | 23 --- Handle holder                             | 38 --- Allen screw                     | 53 --- Tank buckle             |
| 9 --- Cross countersunk head self-tapping screw | 24 --- Allen screw                               | 39 --- Spring gasket                   | 54 --- Water tank              |
| 10 --- Power switch bracket                     | 25 --- Cross countersunk screw                   | 40 --- Waterproof cover                | 55 --- Support board           |
| 11 --- Power switch                             | 26 --- Three hole outlet                         | 41 --- Pull rod                        | 56 --- Cap nut                 |
| 12 --- Cross countersunk screw                  | 27 --- Cross countersunk head self-tapping screw | 42 --- Spring                          | 57 --- Valve seat              |
| 13 --- Swashplate head screw                    | 28 --- Three-hole outlet cover                   | 43 --- Selector casing                 | 58 --- Pull rod                |
| 14 --- Hex nut                                  | 29 --- Allen screw                               | 44 --- Hex nut                         | 69 --- Tank chain              |
| 15 --- Flat washer                              | 30 --- Allen screw                               | 45 --- Selector plunger                |                                |

## BF517B/519B/521B/522B EXPLODED VIEW



NO. Name

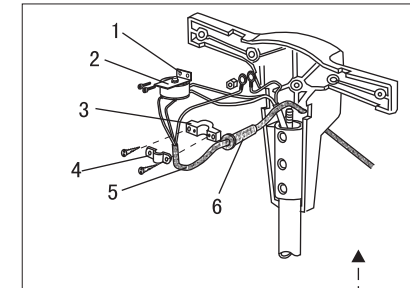
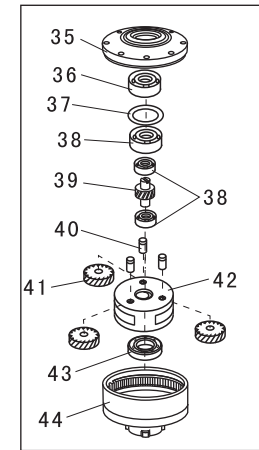
- 1 --- Handle cover
- 2 --- Iron rod
- 3 --- Left starting handle
- 4 --- Right starting handle
- 5 --- Handle adjustment lever
- 6 --- Power switch
- 7 --- Overload protection device
- 8 --- Cross countersunk head self-tapping screw
- 9 --- Switch box cover
- 10 --- Swashplate head screw
- 11 --- Switch box
- 12 --- Three-hole outlet cover
- 13 --- Three hole outlet
- 14 --- Cross countersunk head self-tapping screw
- 15 --- Handle wrap

- 16 --- Flat washer
- 17 --- Swashplate head screw
- 18 --- Small wire
- 19 --- Operating lever
- 20 --- Flat washer
- 21 --- Hex nut
- 22 --- Small cable clip
- 23 --- Hand holder
- 24 --- Swashplate head screw
- 25 --- Hex nut
- 26 --- Limit ring
- 27 --- Sleeve
- 28 --- Spring
- 29 --- Switch button
- 30 --- Spring gasket
- 31 --- Allen screw

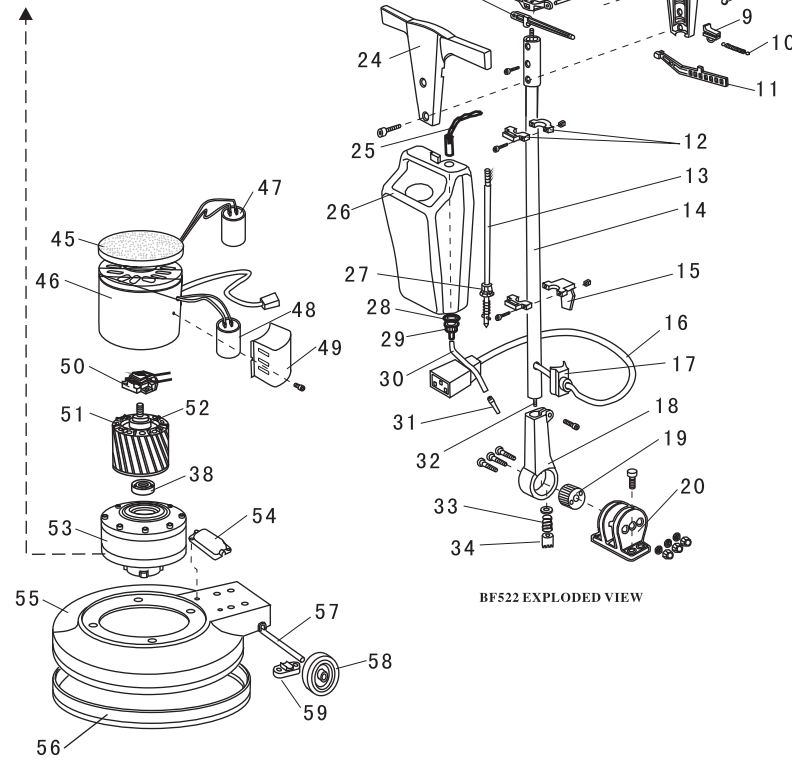
- 32 --- Cable support
- 33 --- Cable grommet
- 34 --- Three-flat-pin plug power
- 35 --- Riveting nut
- 36 --- Wire block
- 37 --- Swashplate head screw
- 38 --- Spring gasket
- 39 --- Allen screw
- 40 --- Pull rod
- 41 --- Spring
- 42 --- Selector plunger
- 43 --- Selector casing
- 44 --- O-rubber ring
- 45 --- Pivot bracket
- 46 --- Cross countersunk screw

- 47 --- Spring gasket
- 48 --- Allen screw
- 49 --- Selector gear
- 50 --- Water pipe
- 51 --- Hex nut
- 52 --- O-rubber ring
- 53 --- Valve seat
- 54 --- Hex nut
- 55 --- Tank post
- 56 --- Waterproof cover
- 57 --- Rubber pad
- 58 --- Tank buckle
- 59 --- Tank knob
- 60 --- Water tank
- 61 --- Support board
- 62 --- Cap nut

## BF522/522A/522B EXPLODED VIEW



1. Switch holder
2. Switch
3. Holder
4. Cable clamp
5. Cable
6. Cable grommet
7. Cover
8. Steel ball
9. Safety interlock lever
10. Spring
11. Switch lever
12. Tank support
13. Valve rod
14. Wand
15. Cable holder
16. Cable straight connector
17. Cable support
18. Selector casing
19. Selector gear
20. Pivot bracket
21. Pin
22. Handle adjustment lever
23. Fluid control lever
24. Cover
25. Chain
26. Tank
27. Valve housing
28. Seal washer
29. Valve seat
30. Hose
31. Feed nozzle
32. Pull rod
33. Spring
34. Selector plunger
35. Top cover
36. 6010 bearing
37. Bearing washer
38. 6002 bearing
39. Lay shaft
40. Gear shaft
41. Gear
42. Gear holder
43. 6204 bearing
44. Planetary box
45. Top cover
46. Motor
47. Capacitor
48. Capacitor
49. Capacitor cover
50. Starter switch
51. Rotor
52. 6203 bearing
53. Gear case
54. Waterproof cover
55. Base casting
56. Rubber buffer
57. Wheel
58. Wheel axle
59. Axle retainer






BF522/522A/522B EXPLODED VIEW

BF522 EXPLODED VIEW




## BF522/522A/522B MULTIFUNCTIONAL BURNISHER

### Technical Parameter

Model NO	BF522	BF522A	BF522B
Voltage	AC 220-240V 0/60Hz		
Horsepower	1.5hp		
Power	1200W		
Working speed	175r/min		
Motor speed	1400r/min		
Noise level	≤62dB		
Cable length	12M		
Base diameter	17"		
Net weight	50Kg	54Kg	54Kg
Resistance level	IPX 1		
Regular longevity	5–6 years		
Material	Aluminum and plastic		
Anti-cautery	acid and alkalis resistance		
Shocking resistance	light shock resistance		
Accessories	carpet brush,floor brush, pad drive and water tank		
Main function	floor cleaning,carpet cleaing, burnish,low-speed polish		
Product picture			

## BF517/517A/517B MULTIFUNCTIONAL BURNISHER

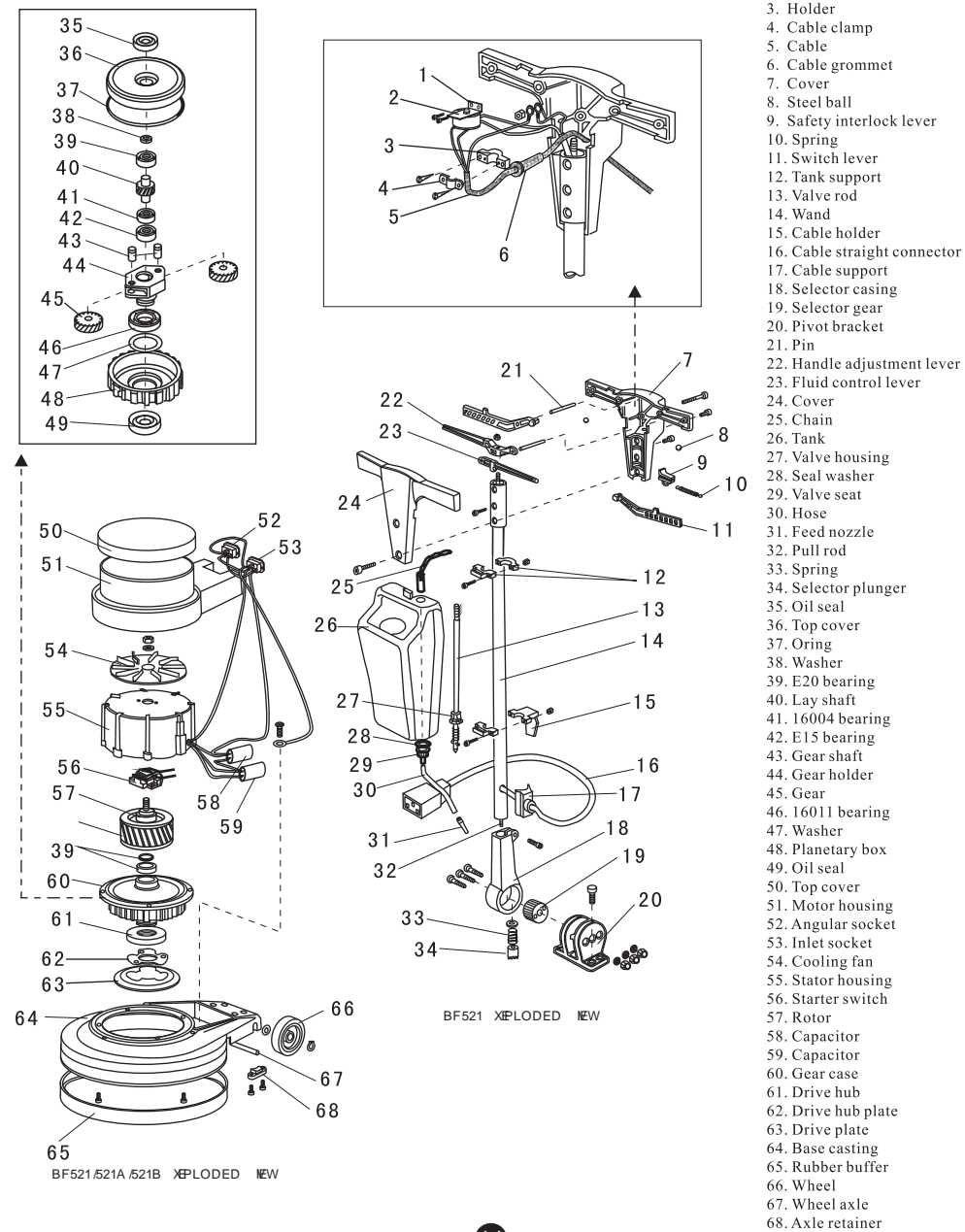
### Technical Parameter

Model NO	BF517	BF517A	BF517B
Voltage	AC 220-240V 0/60Hz		
Horsepower	1.5hp		
Power	1200W		
Working speed	175r/min		
Motor speed	1400r/min		
Noise level	≤62dB		
Cable length	12M		
Base diameter	17"		
Net weight	50Kg	54Kg	54Kg
Resistance level	IPX 1		
Regular longevity	5–6 years		
Material	Aluminum and plastic		
Anti-cautery	acid and alkalis resistance		
Shocking resistance	light shock resistance		
Accessories	carpet brush,floor brush, pad drive and water tank		
Main function	floor cleaning,carpet cleaing, burnish,low-speed polish		
Product picture			

## BF517EXPLODED VIEW



## BF521/521A /521B XEXPLODED NEW






BF521 XEXPLODED NEW

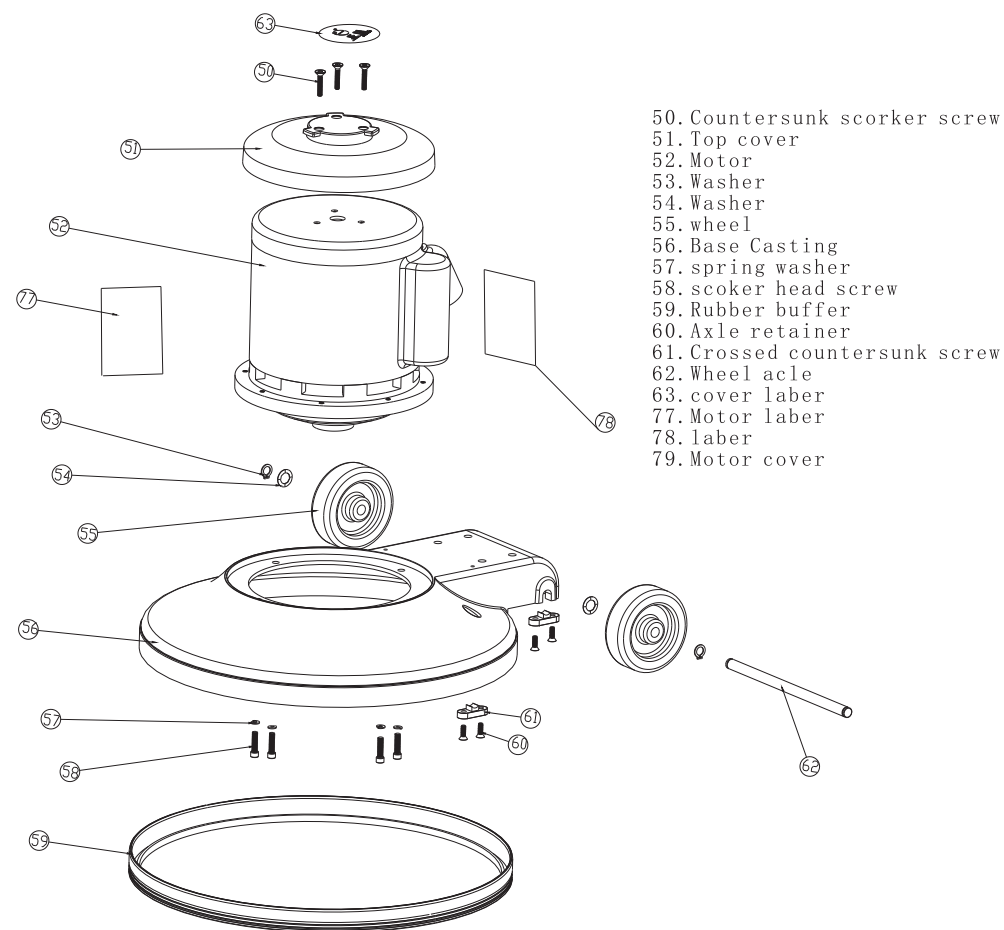
BF521/521A /521B XEXPLODED NEW

## BF521/521A/521B MULTIFUNCTIONAL BURNISHER

### Technical Parameter




Model NO	BF521	BF521A	BF521B
Voltage	AC 220-240V 0/60Hz		
Horsepower	1.5hp		
Power	1200W		
Working speed	154r/min		
Motor speed	1400r/min		
Noise level	≤62dB		
Cable length	12M		
Base diameter	17"		
Net weight	48Kg	51Kg	51Kg
Resistance level	IPX 1		
Regular longevity	5-6 years		
Material	Aluminum and plastic		
Anti-cautery	acid and alkalis resistance		
Shocking resistance	light shock resistance		
Accessories	carpet brush, floor brush, pad drive and water tank		
Main function	floor cleaning, carpet cleaing, burnish, low-speed polish		
Product picture			

## BF517/517A/517B XPLoded NEW

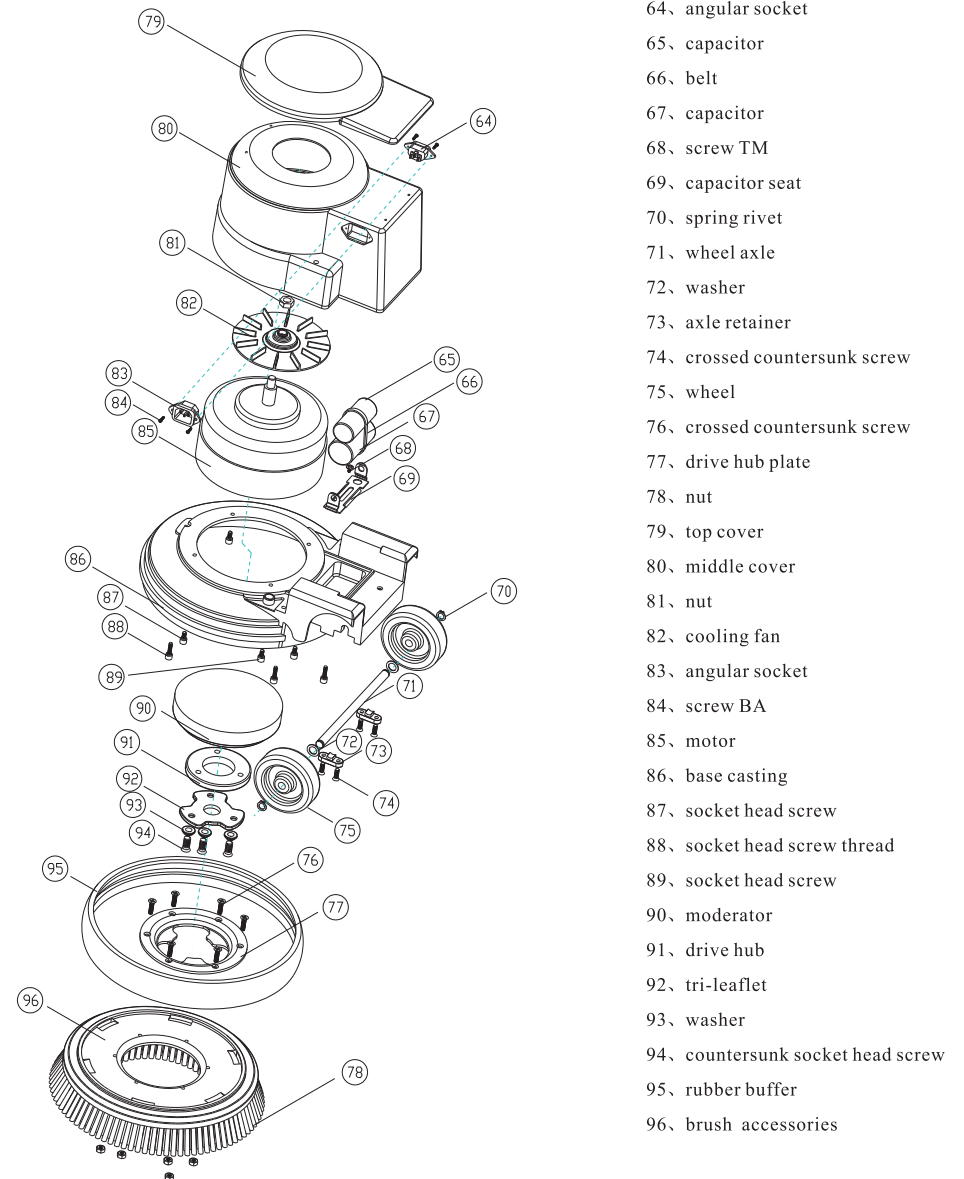


## BF519/519A/519B MULTIFUNCTIONAL BURNISHER

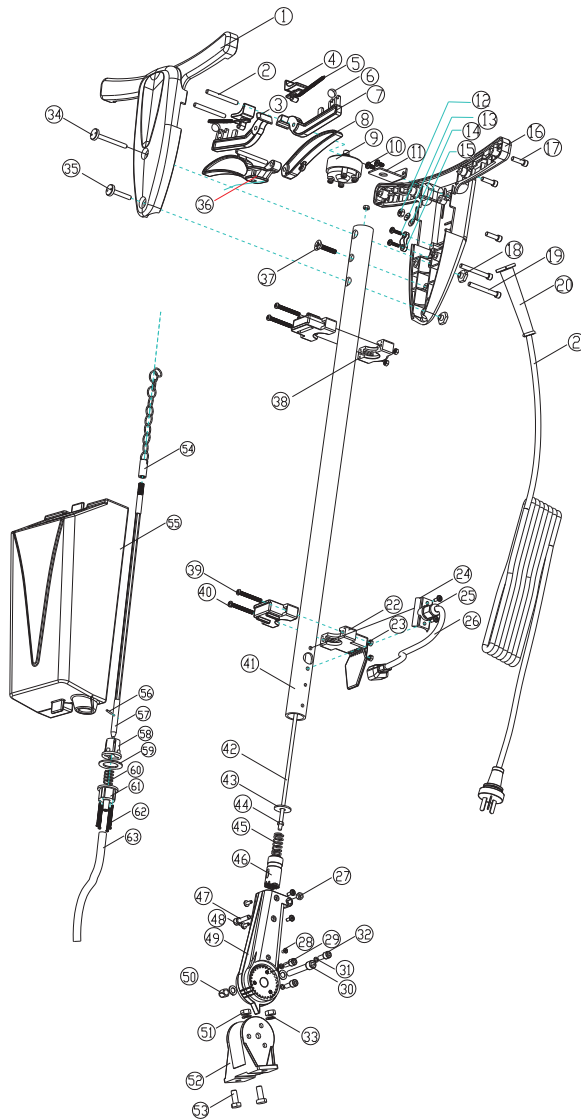
### Technical Parameter

Model NO	BF519	BF519A	BF519B
Voltage	AC 220-240V 0/60Hz		
Horsepower	1.5hp		
Power	1200W		
Working speed	175r/min		
Motor speed	1400r/min		
Noise level	≤62dB		
Cable length	12M		
Base diameter	17"		
Net weight	60Kg	63Kg	63Kg
Resistance level	IPX 1		
Regular longevity	5-6 years		
Material	Aluminum and plastic		
Anti-cautery	acid and alkalis resistance		
Shocking resistance	light shock resistance		
Accessories	carpet brush,floor brush, pad drive and water tank		
Main function	floor cleaning,carpet cleaing, burnish,low-speed polish		
Product picture			

## BF520 EXPLODED VIEW

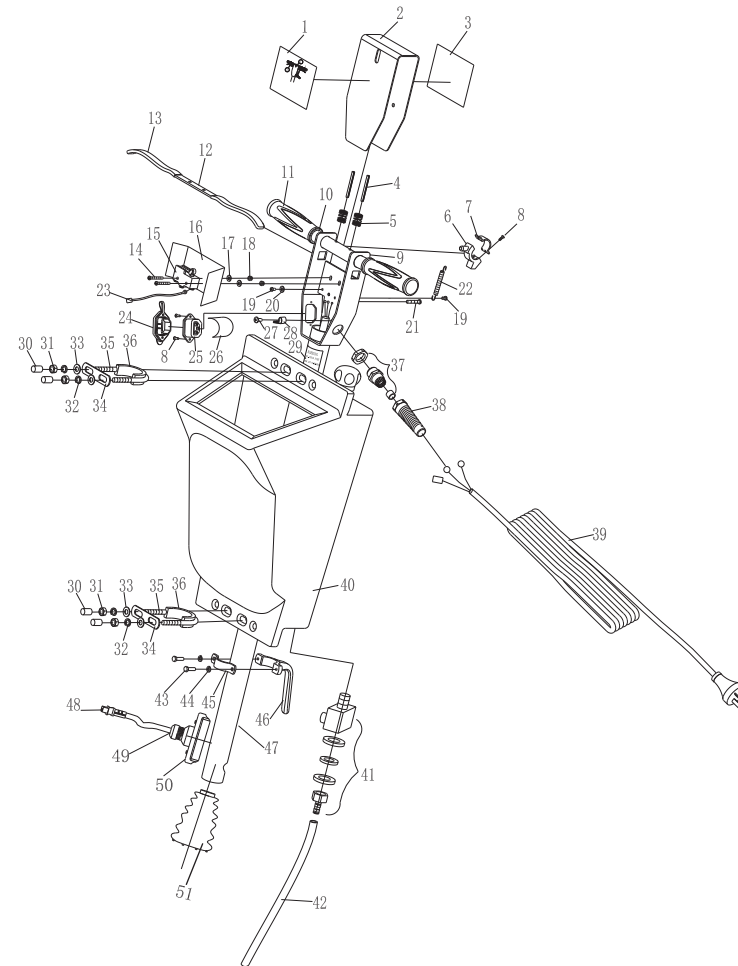


## BF520 EXPLODED VIEW



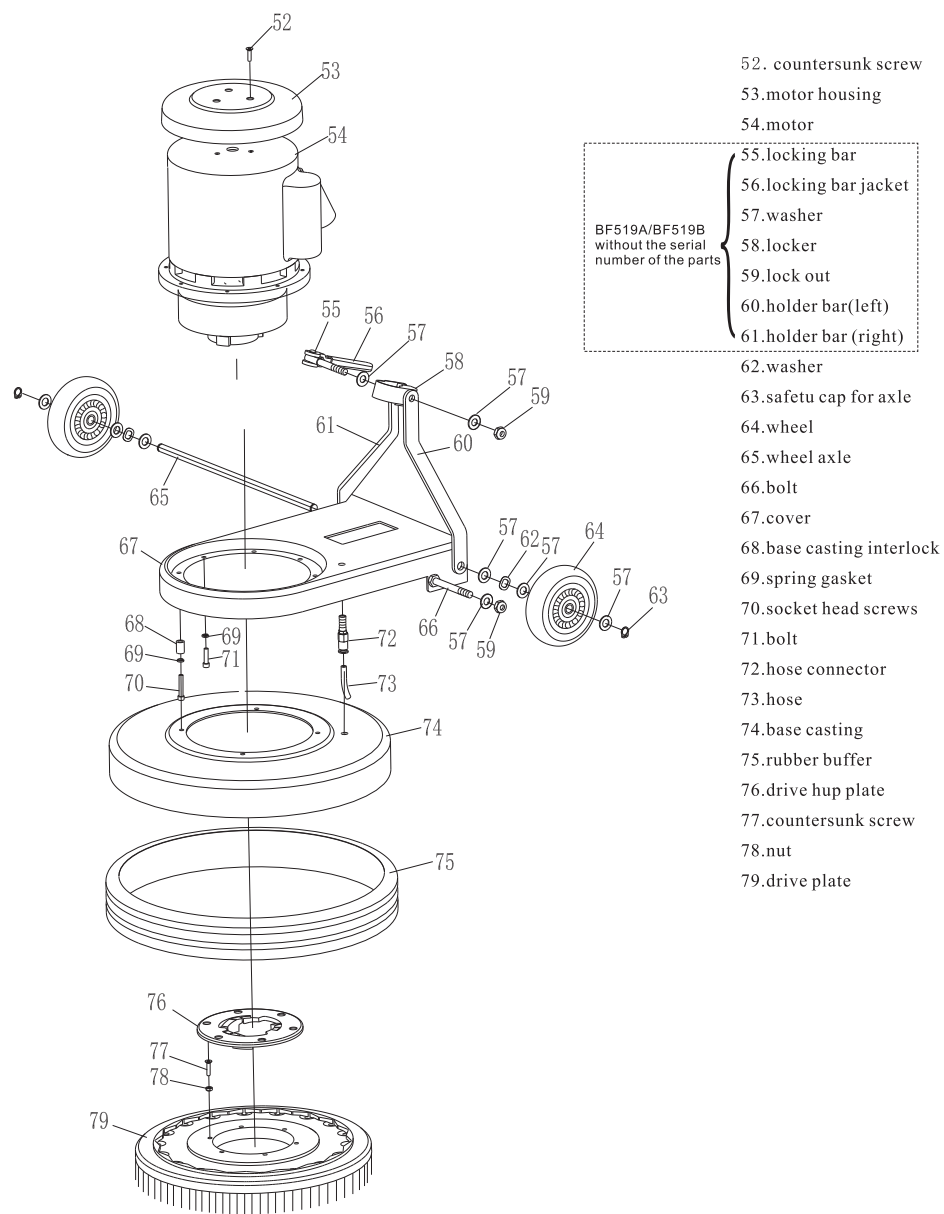
- 1、 cover (head of cattle model)
- 2、 pin
- 3、 switch lever left
- 4、 safety interlock lever (both sides)
- 5、 spring for switch
- 6、 steel boll
- 7、 switch lever right
- 8、 fluit control lever
- 9、 switch
- 10、 crossed round screw
- 11、 switch shelf
- 12、 nut
- 13、 self tapping screw
- 14、 gear washers
- 15、 cable clamp
- 16、 cover
- 17、 socket head screw
- 18、 nut
- 19、 socket head screw
- 20、 cable grommet
- 21、 cable
- 22、 cable holder
- 23、 nut
- 24、 cable support
- 25、 straight connector
- 26、 cable
- 27、 nut
- 28、 crossed countersunk screw
- 29、 selector gear
- 30、 socket head screw
- 31、 spring washer
- 32、 socket head screw
- 33、 spring washer
- 34、 round bolt
- 35、 round bolt
- 36、 handle adjustment lever
- 37、 crossed countersunk screw
- 38、 tank retainer buckle
- 39、 screw BM
- 40、 tank retainer
- 41、 wand
- 42、 pull rod
- 43、 washer
- 44、 nut
- 45、 selector plunger spring
- 46、 selector plunger
- 47、 socket head screw
- 48、 rivet
- 49、 selector casing
- 50、 screw cap
- 51、 nut
- 52、 pivot bracket
- 53、 pan hex head cap screw
- 54、 chain buckle
- 55、 tank
- 56、 pin
- 57、 valve rod
- 58、 valve seat
- 59、 seal washer
- 60、 spring
- 61、 bonnet
- 62、 crossed self tapping screw
- 63、 hose

## BF519 EXPLODED VIEW



- 1、 brand pasteur
- 2、 cover
- 3、 instruction pasteur
- 4、 pin
- 5、 spring
- 6、 safety catch
- 7、 safety catch support
- 8、 countersunk screw
- 9、 handle shelf
- 10、 tube of handle
- 11、 handle
- 12、 switch lever
- 13、 insulator
- 14、 round screw
- 15、 star-up switch
- 16、 insulator
- 17、 washer
- 18、 hex head cap nut
- 19、 round screw
- 20、 cinquefoil washer
- 21、 round screw
- 22、 cable (coffee )
- 23、 spring
- 24、 socket cover
- 25、 socket
- 26、 insulator
- 27、 pan screw
- 28、 groove gasket
- 29、 caution pasteur
- 30、 plastic bolt
- 31、 nut
- 32、 spring gasket
- 33、 washer
- 34、 tank set dowel
- 35、 U-shaped bolt
- 36、 concave colloid
- 37、 cable support
- 38、 cable grommet
- 39、 cable
- 40、 deluxe tank
- 41、 valve seat
- 42、 hose
- 43、 hex head cap screws
- 44、 spring gasket
- 45、 cable holder
- 46、 cable support
- 47、 wand
- 48、 cable straight connector
- 49、 straight connector
- 50、 cable support
- 51、 handle grommet

## BF519/519A/519B EXPLODED VIEW



## BF520 MULTIFUNCTIONAL BURNISHER

### Technical Parameter

Model NO	BF520
Voltage	AC 220-240V 0/60Hz
Horsepower	1hp
Power	750W
Working speed	190r/min
Motor speed	/
Noise level	≤62dB
Cable length	12M
Base diameter	13"
Net weight	33Kg
Resistance level	IPX 1
Regular longevity	5-6 years
Material	Aluminum and plastic
Anti-cautery	acid and alkalis resistance
Shocking resistance	light shock resistance
Accessories	carpet brush, floor brush, pad drive and water tank
Main function	floor cleaning, carpet cleaing, burnish, low-speed polish
Product picture	